

CERTIFICATE OF LOCATION OF GOVERNMENT CORNER

EAST 1/4 Corner of Section 6, Township 106, Range 43, 5th P.M.

STATE OF MINNESOTA, County of MURRAY

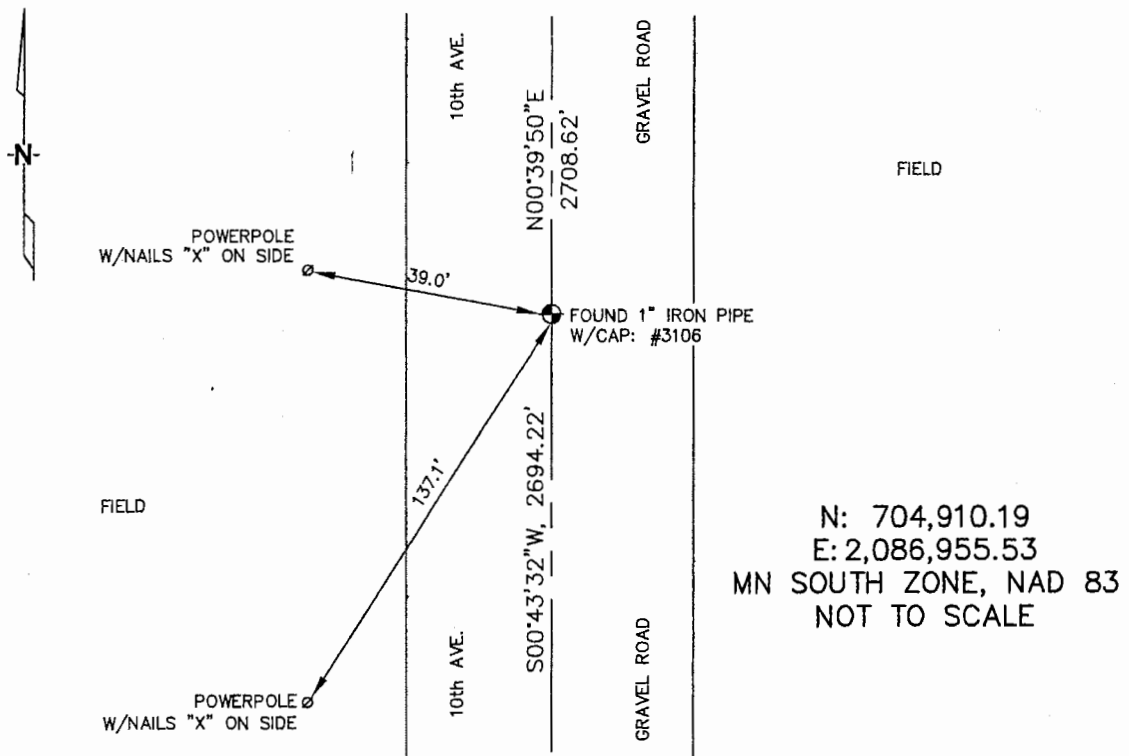
At the corner location shown on the sketch :

On 3/23/2006 found 1" IRON PIPE, WITH CAP: #3106.

left monument as found, lowered monument, removed monument (explain)

On _____ set _____

Sketch of reference ties



Statement of evidence relative to this corner location is on back page

I hereby certify that this document and the data contained herein was prepared by me or under my direct supervision.

Thomas V. Zeff Signature 5/9/06 Date
Registration No. 44563

- Land Surveyor, Professional Engineer
- County Surveyor, County Engineer

OFFICE OF THE COUNTY RECORDER

County of _____

SEP 28 2006

I hereby certify that this document was filed in the Co. Recorders office at _____ .M. on the day of _____ A.D. , 20

County Recorder James V. Johnson
By _____, Deputy

DOCUMENT NO. _____

STATEMENT OF EVIDENCE:

EAST 1/4 CORNER, SECTION 6, T. 106 N., R. 43 W.,
MURRAY COUNTY, MINNESOTA

1866 J.W. Bishop, US. Deputy Surveyor, monumented corner.

3/22/2006 Uiteig Engineers, Inc., Survey Crew, Brian Payne Party Chief, found a 1" iron pipe with cap: #3106.

Ties: W-39.0' to nailed "X" on south side of power pole;
SW-137.1' to nailed "X" on west side of power pole;
N-2708.62' to NE corner, Section 6;
S-2694.22' to SE corner, Section 6.